

## Lintels for Heavy Duty applications

# CI27 Lintel range

This is a super heavy duty lintel, designed around a standard I-section for strength & economy, but still with the benefit of stainless steel in the cavity and outer; See pgs 24 & 25 for lintel features and options

Specification table for CI27 Lintels

Nominal cavity size (mm)	Nominal inner leaf (mm)	SPECIFY	Overall Height (mm)	Overall Width (mm)	Steel Gauge (mm)	Mass (kg/m)	Form Type	Ixx (cm <sup>4</sup> )	Zxx (cm <sup>3</sup> )
	100-115	(not available)							
47-56	125-140	CI27-100/50/125*	264	267	4.0	55.6	No	8225.5	559.56
	190-215	CI27-100/50/175	264	332	4.0	58.5	Yes	8789.0	589.87
57-71	100-115	CI27-100/60/100*	264	252	4.0	55.1	No	8135.6	557.23
	125-140	CI27-100/60/125*	264	277	4.0	56.0	No	8280.0	559.46
	190-215	CI27-100/60/175	264	342	4.0	58.9	Yes	8844.0	589.60
72-84	100-115	CI27-100/75/100*	264	267	4.0	55.6	No	8225.5	559.56
	125-140	CI27-100/75/125	264	292	4.0	56.2	No	8294.7	556.69
	190-215	CI27-100/75/175	264	357	4.0	59.4	Yes	8895.0	589.07
85-96	100-115	CI27-100/90/100*	264	280	4.0	55.8	No	8250.6	557.47
	125-140	CI27-100/90/125	264	305	4.0	57.0	No	8444.8	562.98
	190-215	CI27-100/90/175	264	370	4.0	59.7	Yes	8933.0	587.70
97-119	100-115	CI27-100/100/100	264	292	4.0	56.2	No	8294.7	556.69
	125-140	CI27-100/100/125	264	317	4.0	57.5	Yes	8510.7	567.38
	190-215	CI27-100/100/175	264	382	4.0	60.1	Yes	8954.0	585.23
120-139	100-115	CI27-100/120/100	264	315	4.0	57.8	No	8628.0	579.06
	125-140	CI27-100/120/125	264	340	4.0	57.9	Yes	8507.8	556.07
	190-215	CI27-100/120/175	264	405	4.0	61.1	Yes	9094.0	590.52
140-160	100-115	CI27-100/140/100	264	335	4.0	58.6	Yes	8737.8	582.52
	125-140	CI27-100/140/125	264	360	4.0	58.8	Yes	8625.0	560.06
	190-215	CI27-100/140/175	264	425	4.0	62.0	Yes	9215.0	594.52

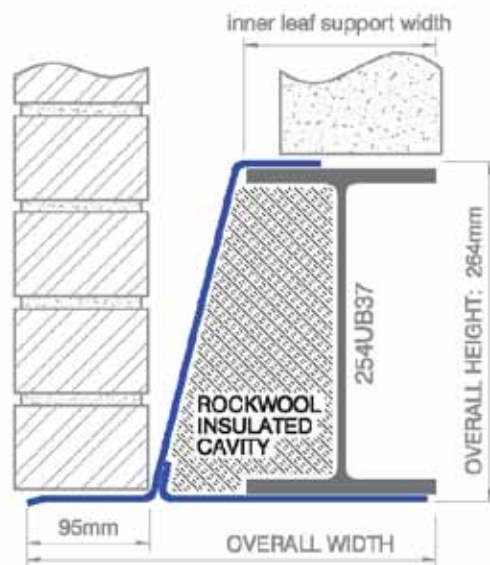
NOTES: CAUTION! Recommended only for applications with a dry inner leaf (most typical buildings). Lintels sizes marked (\*) have a flat connection with the outer due to narrow cavity restriction..

### Why use a CI27 Lintel?

- Mild steel economy but with
- Stainless steel durability
- Easy structural analysis
- Conventional structural connections if required

### Options

- Bolted end connections
- Stepped or cant outer
- Special outer dimensions
- Special inner dimensions
- Plaster key on the base or back



### Allowable load for all CI27 Lintels\*

Opening Span	Lintel Length	Max total load (kN)*	Load Example (see pg 85)
900	1200	145.9	
1050	1350	150.9	
1200	1500	155.9	
1350	1650	155.9	
1500	1800	155.9	
1650	1950	155.9	
1800	2100	155.9	
1950	2250	155.9	
2100	2400	155.9	
2250	2550	155.9	
2400	2700	155.9	
2550	2850	155.9	
2700	3000	155.9	
2850	3150	155.9	
3000	3300	155.9	
3150	3450	155.9	
3300	3600	155.9	
3450	3750	155.9	
3600	3900	155.9	
3750	4050	155.9	
3900	4200	155.9	
4050	4350	155.9	
4200	4500	155.9	
4350	4650	155.9	
4500	4800	155.9	masonry & concrete floor
4650	4950	155.9	
4800	5100	154.4	
4950	5250	145.2	
5100	5400	136.8	
5250	5550	129.1	
5400	5700	122.0	masonry & tiled roof
5550	5850	115.5	
5700	6000	109.5	
5850	6150	104.0	
6000	6300	98.8	
6150	6450	94.1	
6300	6600	89.6	full height masonry
6450	6750	85.5	
6600	6900	81.7	
6750	7050	78.1	
6900	7200	74.7	
7050	7350	71.6	
7200	7500	68.6	
7350	7650	65.9	
7500	7800	63.3	900mm of masonry
7650	7950	60.8	
7800	8100	58.5	
7950	8250	56.3	
8100	8400	54.2	
8250	8550	52.3	

Shorter & intermediate lengths can be produced

Permissible Moment\*: 94.0 kN.m  
Permissible Point Load\*: 71.0 kN

LOAD RATIO LIMITS\* (OUTER : INNER)

65-100% Max load: 1:3 - 1:29

OR

< 65% Max Load: 1:2 - 1:29

\*See page 78 for loading & Installation guide

Many variations are possible, we can even hide the lintel with Feature Brick options! (see page 74) - All standard in LDX2101® Stainless Steel. Call 01206 79 2001 to discuss or visit [www.stainless-lintels.co.uk](http://www.stainless-lintels.co.uk)