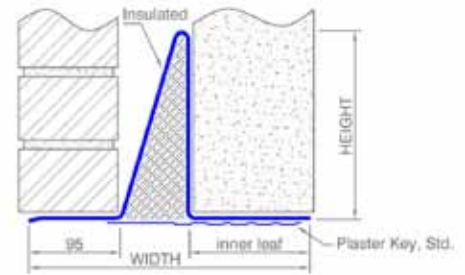


Cavity wall lintels - Medium duty

CA20 range

CA20 lintels are similar to CA19 lintels but are manufactured from heavier gauge steel to give increased load capacity.



Specification table for CA20 Lintels

Nominal cavity size (mm)	Nominal inner leaf (mm)	SPECIFY	Overall Height (mm)	Overall Width (mm)	Steel Gauge (mm)	Mass (kg/m)	Form Type	Ixx (cm ⁴)	Zxx (cm ³)
47-56	100-115	CA20-100/50/100	212	242	3.0	14.4	1	934.2	68.19
	125-140	CA20-100/50/125	199	267	3.0	14.4	1	822.3	61.83
	190-215	CA20-100/50/190	202	332	3.0	19.9	2	1058.0	69.61
57-71	100-115	CA20-100/60/100	211	252	3.0	14.4	1	925.3	67.54
	125-140	CA20-100/60/125	198	277	3.0	14.4	1	813.4	61.62
	190-215	CA20-100/60/190	201	342	3.0	20.2	2	1057.0	69.54
72-84	100-115	CA20-100/75/100	209	267	3.0	14.4	1	907.0	67.19
	125-140	CA20-100/75/125	196	292	3.0	14.4	1	797.0	60.84
	190-215	CA20-100/75/190	199	357	3.0	20.4	2	1042.0	69.01
85-96	100-115	CA20-100/90/100	209	280	3.0	14.5	1	911.4	67.51
	125-140	CA20-100/90/125	194	305	3.0	14.4	1	780.7	60.05
	190-215	CA20-100/90/190	197	370	3.0	20.9	2	1034.0	68.93
97-119	100-115	CA20-100/100/100	206	292	3.0	14.5	1	882.8	66.38
	125-140	CA20-100/100/125	192	317	3.0	14.4	1	765.1	59.77
	190-215	CA20-100/100/190	195	382	3.0	21.2	2	1019.0	68.39
120-139	100-115	CA20-100/120/100	198	315	3.0	14.5	3	819.6	64.54
	125-140	CA20-100/120/125	198	340	3.0	15.1	3	854.7	66.26
	190-215	CA20-100/120/190	201	405	3.0	22.3	4	1165.0	76.64
140-160	100-115	CA20-100/140/100	202	335	3.0	14.9	3	880.0	68.75
	125-140	CA20-100/140/125	202	360	3.0	15.5	3	918.0	70.08
	190-215	CA20-100/140/190	205	425	3.0	23.1	4	1268.0	81.81

NOTES: The lintel form varies, see below. Note: CA20 lintels of type 3&4 must be installed with a separate DPC. Types 1&2 do not require a separate DPC and are supplied with stop ends* to affix on site (refer pages 78&88)

Need a stronger lintel? See CA21 >

Allowable load for all CA20 Lintels*

Opening Span	Lintel Length	Max total load (kN)*	Load Example (see pg 85)	
1500	1800	55.0	masonry & timber floor	
1650	1950	50.4		
1800	2100	46.6		
1950	2250	43.2		
2100	2400	40.3		
2250	2550	37.8		
2400	2700	35.6		
2550	2850	33.6		
2700	3000	31.9		light blocks & light floor
2850	3150	30.3		
3000	3300	28.8		
3150	3450	27.5		
3300	3600	26.3	full height masonry	
3450	3750	25.2		
3600	3900	24.2		
3750	4050	23.2		
3900	4200	21.5	400mm of masonry	
4050	4350	19.9		
4200	4500	18.5		
4350	4650	17.3		
4500	4800	16.1		

Shorter & intermediate lengths can be produced!

Permissible moment: 11.3 kN.m
Permissible Point Load: 9.1 kN

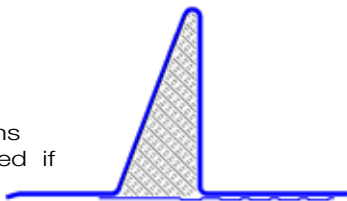
LOAD LOAD RATIO LIMITS* (OUTER : INNER)
65-100% Max load: 1:1 - 1:3 OR < 65% Max Load: 2:1 - 1:5

*See page 78 for loading & Installation guide

STANDARD VARIATIONS OF ALL CA-TYPE LINTELS

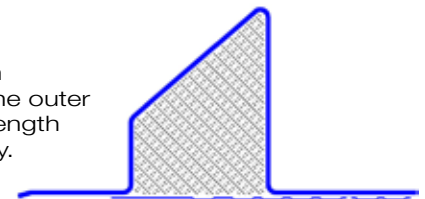
FORM TYPE 1

Standard form for Cavity sizes up to 120mm and moderate inner leaf widths (No separate DPC required if over 150mm high).



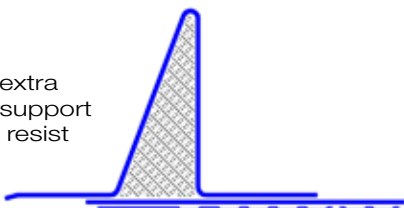
FORM TYPE 3

Form type 1 with an additional bend in the outer web to maintain strength over the wider cavity.



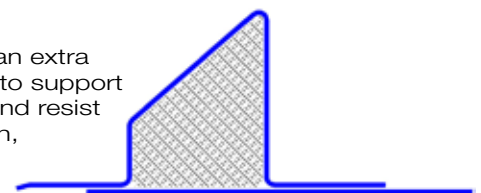
FORM TYPE 2

Form type 1 with an extra plate on the base to support a wide inner leaf and resist associated rotation,



FORM TYPE 4

Form type 3 with an extra plate on the base to support a wide inner leaf and resist associated rotation,



Although standard in LDX2101®, we can also produce these lintels in SS370. Galvanised and grade 304 are lower strength materials and best chosen from our RED lintel catalogue, or visit www.lintels.co.uk