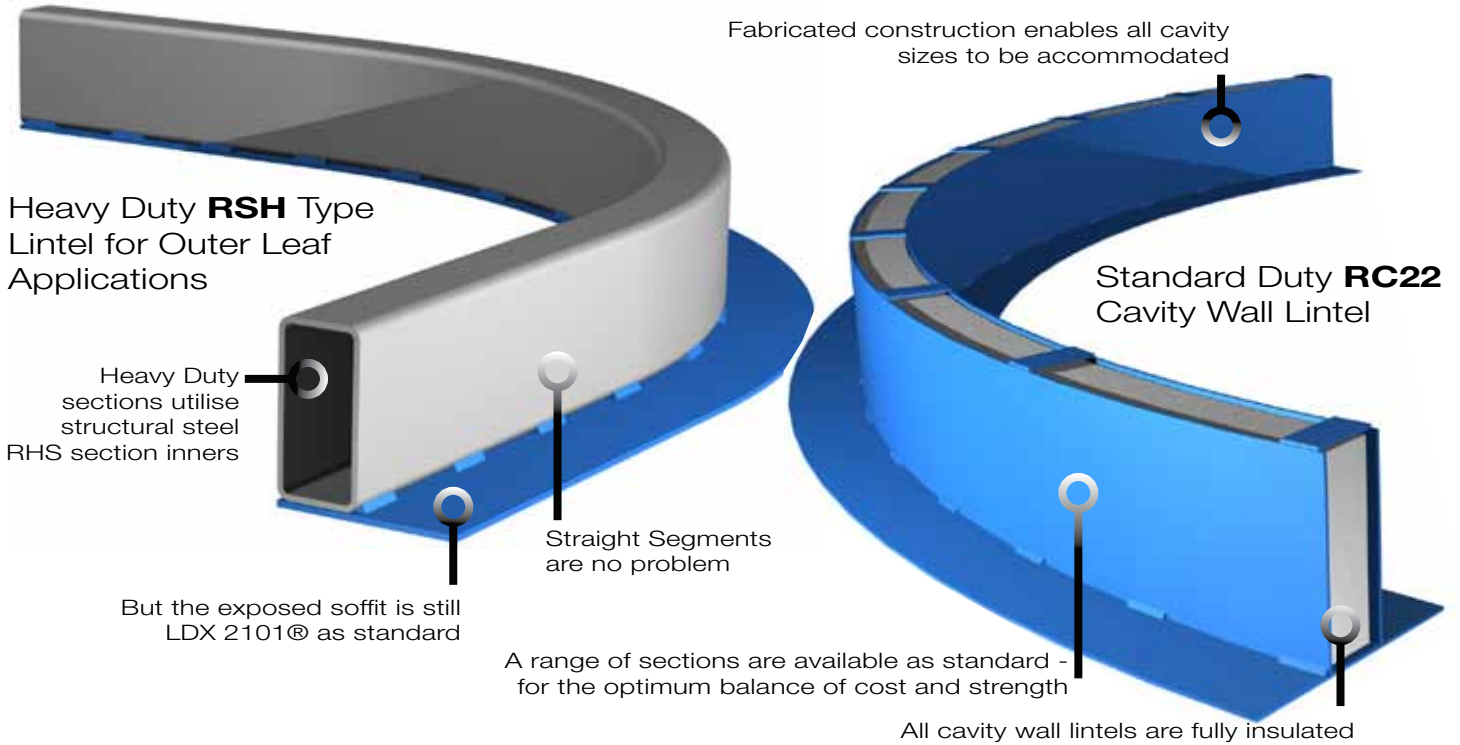


For all wall types

Curved-on-Plan Lintels



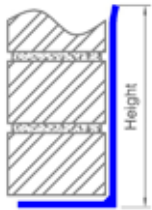
Allowable distributed Loads (kN) for Curved Lintels

clear span (mm)	Single walls		Single&Double	Double walls		Cavity walls				Load example (see P85)
	RS17	RS21	RSH17	RD17	RD21	RC16	RC22	RC23	RCH17	
600	11.0	33.9	106.1	16.3	46.3	14.3	33.3	82.8	119.4	masonry & concrete floor
750	9.2	28.3	106.1	13.6	38.6	11.9	27.8	69.0	119.4	
900	7.8	24.2	106.1	11.6	33.1	10.2	23.8	59.1	119.4	
1050	6.9	21.2	106.1	10.2	29.0	8.9	20.8	51.7	119.4	
1200	6.1	18.9	106.1	9.1	25.7	7.9	18.5	46.0	119.4	
1350	5.5	17.0	106.1	8.1	23.2	7.2	16.7	41.4	119.4	
1500	5.0	15.4	95.5	7.4	21.1	6.5	15.1	37.6	107.4	
1650	4.6	14.1	86.8	6.8	19.3	6.0	13.9	34.5	97.7	
1800	4.2	13.1	79.6	6.3	17.8	5.5	12.8	31.8	89.5	
1950		12.1	73.5		16.6		11.9	29.6	82.6	
2100		11.3	68.2		15.4		11.1	27.6	76.7	
2250		10.6	63.7		14.5		10.4	25.9	71.6	
2400		10.0	59.7		13.6		9.8	24.3	67.1	
2550		9.4	56.2		12.9			23.0	63.2	
2700		8.5	53.0		12.2			21.8	59.7	
2850			50.3		11.6			20.7	56.5	
3000			47.7		11.0			19.7	53.7	
3150			45.5					18.8	51.2	
3300			43.4					18.0	48.8	
3450			41.5					17.2	46.7	
3600			39.8					16.6	44.8	
3750			38.2						43.0	
3900			36.7						41.3	
4050			34.7						39.0	
4200			32.2						36.3	
Maximum Moment (kN.m):	1.3	4.3	22.4	1.5	4.3	1.3	3.1	7.8	23.4	White loads: 440mm masonry
Maximum Point Load (kN):	4.0	12.0	47.0	6.5	18.5	5.7	13.3	33.1	47.0	

CAUTION!! Curved lintels frequently require longer than normal bearings or an intermediate post mid-span in order not to 'overbalance'.

Many variations are possible, including bolted connections & other specially fabricated features - All standard in LDX2101® Stainless Steel. Call 01206 79 2001 to discuss or visit www.stainless-lintels.co.uk

Curved-On-Plan Range



RS Lintels - Curved Lintels for Single leaf masonry

	Designation	Height	Suit Masonry Thickness (mm)	Mass (kg/m)	lxx min (cm ⁴)	Zxx min (cm ³)
Sizes Available:	RS17:	174mm	Outer = 100, 115, 125	8.4 - 8.8	352.0	29.0
	RS21:	211mm		14.4 - 15.0	879.0	65.0

To specify: Simply suffix the required lintel with your wall nominal width, eg: "RS21-100"

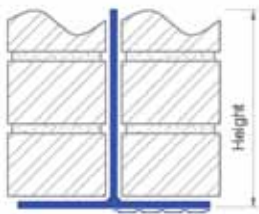


RSH Lintels - Heavy Duty, for Single or Double walls

	Designation	Height	Suit Masonry Thickness (mm)	Mass (kg/m)	lxx min (cm ⁴)	Zxx min (cm ³)
Sizes Available:	RSH17:	174mm	Outer = 100, 115, 125, 140 (RHS width = 80mm for all)	29 - 31	1,354	130.0

To specify: For single walls, suffix the required lintel with your nominal wall width, eg: "RSH17-100"
For double walls, suffix the required lintel with your wall outer/inner, eg: "RSH17-100/100"

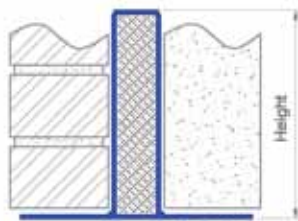
Note: Constructed of 160x80mm mild steel RHS with stainless base, for double walls the inner sits on the RHS.



RD Lintels - Lintels for Double Leaf Solid Walls

	Designation	Height	Suit Masonry Thickness (mm)	Mass (kg/m)	lxx min (cm ⁴)	Zxx min (cm ³)
Sizes Available:	RD17:	174mm	Outer= 100, 115, 125, 140	11.5 - 14.0	442.0	33.5
	RD21:	206mm	Inner= 100, 115, 125, 140	18.6 - 22.3	1,037	68.2

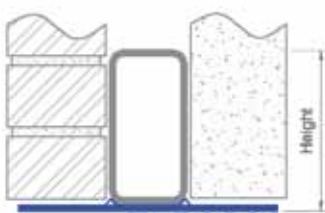
To specify: Suffix the required lintel with your wall nominal outer & inner leaf dimensions, eg: "RD17-100/100"



RC Lintels - Lintels for Curved Cavity Walls

	Designation	Height	Suit Masonry Thickness (mm)	Mass (kg/m)	lxx min (cm ⁴)	Zxx min (cm ³)
Sizes Available:	RC16:	166mm	Outer= 100, 115, 125, 140	13.0 - 14.6	479.0	40.66
	RC22:	218mm	Cavities = 60-150	20.5 - 23.6	1,321	89.2
	RC23:	232mm	Inner= 100, 115, 125, 140	32 - 36	2,261	144.9

To specify: Suffix the required lintel with your wall nominal outer/cavity/inner, eg: "RC16-100/85/125"



RCH Lintels - Heavy Duty Lintels for Curved Cavity Walls

	Designation	Height	Suit Masonry Thickness (mm)	Mass (kg/m)	lxx min (cm ⁴)	Zxx min (cm ³)
Sizes Available:	RCH17:	174mm	Outer = 100, 115, 125, 140	33 - 38	1,528	136.0
			Cavities = 90 -125			
			Inner = 100, 115, 125, 140			

To specify: Suffix the required lintel with your wall nominal outer/cavity/inner, eg: "RC16-100/85/125"

Note: Constructed of 160x80mm mild steel RHS with stainless base, Other RHS sizes are available if required.

CONFIGURATION NOTES:

Plaster key: Plaster key is standard on double and cavity wall lintels, to order without, add suffix "-F"; eg: RC16-100/85/125-F

Wall widths: Wall construction is always specified in the order "outer/cavity/inner" eg, 100/80/125. Lintels are ordered by wall construction dimensions.

Lintel widths: Lintel width dimensions are determined by our technical department to best suit your required wall construction considering the required curve radius.

STATIC STABILITY NOTE:

It is critical to ensure curved lintels are statically stable, i.e. that they will not overbalance (since the overall load may be outside the line of the bearings!) Overbalancing can be avoided by specifying longer bearings to effectively anchor the lintel at the bearings or by supporting the lintel as necessary around the curve. Standard posts (see page 68) can be used with our curved lintels.

Curve-on-Plan Lintels

Customer Shipping Details

This form is submitted as a (tick): Request for quote: An order:

Customer/Company: _____ Account Ref (if known): _____
 Contact Person: _____ Purchase order or Ref: _____
 Phone Number: _____
 Delivery Address: _____ Invoice address: _____

Curved Lintel & Wall Information

Curved Lintel type: if unsure which lintel type to use, send us plans/loading information or tell us the loads and we can

(EG *RC16)

Wall Construction

mm/ mm/ mm

(Outer) / (Cavity) / (Inner)

You can also sketch your wall below and we will design the lintel to suit.

Feature Brick Options

Tick for feature brick

Brick height f: mm

Note: Feature Brick can be combined with a step and other features, see pages 64 & 72 for more information..

Plaster Key Options (tick one)

No Plaster Key

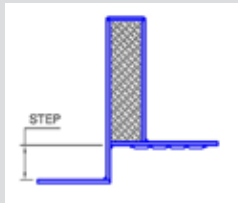
Plaster Key on the inner

Plaster key Inner & Cavity

Full width Plaster Key

3-Centered

Optional Stepped Outer



Tick if required

Step size:

mm

Curved information

Curve radius (wall outside): mm

(radius to the outside of the wall, not the lintel dimension, we will design the lintel to suit the wall)

Curve included Angle: degrees

OR

External wall curve length: mm

Straight sections?: yes/no

Note: Provide a sketch below to show the location of any straight sections in the lintel

Ensure the lintel is 'balanced' i.e. it has sufficiently long bearings or a post to prevent the lintel from overbalancing. If in doubt, please contact our technical department for assistance.

Material Options (tick one)

LDX 2101 Stainless

Grade 304 Stainless

SS370 Stainless

Grade 316 Stainless

Hot Dip Galv. S275JR Mild Steel

G600 Pre-Galv. S280 Mild Steel

Other or Mix (specify in notes)

Note: The safe working loads in this catalogue only apply to SS370 & LDX 2101@. Curved lintels of type RCH will feature a mild steel structural section as illustrated page 71 regardless of material chosen

Post Options

Post Size (ref p68): mm

Post Height: mm

(height = underside of base to underside of lintel)

POST LOCATION

(tick)

Post in the Outer Leaf

Post in the Cavity

Post in the Inner Leaf

OTHER POST OPTIONS

(tick as needed)

Supply without any posts

Special Base Plate (sketch)

Non standard post (sketch)

Top plate flush with lintel base

Post not at mitre (sketch)

Notes: Base plates are usually designed to fit into the wall, so the post may be off-center on the base plate. Base plates require masonry of minimum 7.0N strength for bearing. Refer page 68 for additional information on posts.

QUANTITY REQUIRED, SKETCH & NOTES (as required)

We design your lintel from this information & send it to you for type and dimensional approval prior to manufacture.