

Cavity wall lintels - Heavy duty

CC24 range

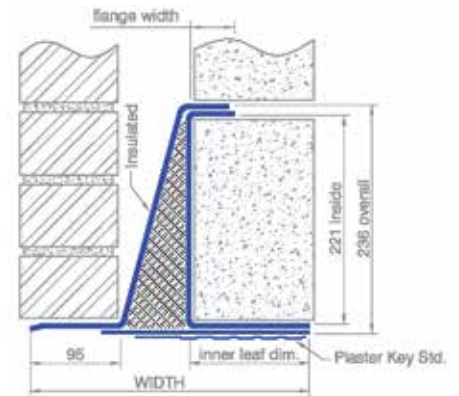
CC24 Lintels are a heavy duty version of the CC23. They feature a solid base plate to resist twisting, making them suitable for applications with HIGH OUTER leaf loads.

Specification table for CC24 Lintels

Nominal cavity size (mm)	Nominal inner leaf (mm)	SPECIFY	Overall Height (mm)	Overall Width (mm)	Steel Gauge (mm)	Mass (kg/m)	Form Type	Ixx (cm ⁴)	Zxx (cm ³)
47-56	100-115	CC24-100/50/100	236	242	3.0&4.0	26.9	2	2654	180.6
	125-140	CC24-100/50/125	236	267	3.0&4.0	27.5	2	2551	164.6
	190-215	CC24-100/50/190	236	332	3.0&4.0	28.9	2	2664	167.5
57-71	100-115	CC24-100/60/100	236	252	3.0&4.0	27.2	2	2671	180.5
	125-140	CC24-100/60/125	236	277	3.0&4.0	27.7	2	2560	164.1
	190-215	CC24-100/60/190	236	342	3.0&4.0	29.2	2	2598	160.4
72-84	100-115	CC24-100/75/100	236	267	3.0&4.0	27.6	2	2705	181.6
	125-140	CC24-100/75/125	236	292	3.0&4.0	29.2	2	2870	188.8
	190-215	CC24-100/75/190	236	357	3.0&4.0	30.6	2	2986	191.4
85-96	100-115	CC24-100/90/100	236	280	3.0&4.0	28.0	2	2707	179.3
	125-140	CC24-100/90/125	236	305	3.0&4.0	28.6	2	2590	162.9
	190-215	CC24-100/90/190	236	370	3.0&4.0	30.7	2	2867	179.2
97-119	100-115	CC24-100/100/100	236	292	3.0&4.0	28.3	2	2698	177.5
	125-140	CC24-100/100/125	236	317	3.0&4.0	28.8	2	2576	161.0
	190-215	CC24-100/100/190	236	382	3.0&4.0	30.2	2	2812	176.9
120-139	100-115	CC24-100/120/100	236	315	3.0&4.0	29.8	4	2957	198.4
	125-140	CC24-100/120/125	236	340	3.0&4.0	30.6	4	2888	180.5
	190-215	CC24-100/120/190	236	405	3.0&4.0	31.9	4	2993	187.1
140-160	100-115	CC24-100/140/100	236	335	3.0&4.0	30.4	4	2956	195.7
	125-140	CC24-100/140/125	236	360	3.0&4.0	31.1	4	2877	182.1
	190-215	CC24-100/140/190	236	425	3.0&4.0	32.5	4	2978	185.0

NOTES: The actual lintel form varies over the range to maintain uniform load capacity, see bottom page 20. CC24 lintels do not require a separate DPC for installation, and are supplied standard with stop ends*

Need a stronger lintel? See CD25 >



Allowable load for all CC24 Lintels*

Opening span	Lintel std length	Max total load (kN)*	Load Example (see pg 85)
1200	1500	98.0	masonry & concrete floor
1350	1650	98.0	
1500	1800	98.0	
1650	1950	98.0	
1800	2100	98.0	
1950	2250	98.0	
2100	2400	98.0	
2250	2550	98.0	
2400	2700	97.4	
2550	2850	92.0	
2700	3000	87.2	
2850	3150	82.8	masonry & tiled roof
3000	3300	78.9	
3150	3450	75.3	
3300	3600	72.0	
3450	3750	69.0	
3600	3900	66.3	
3750	4050	63.7	
3900	4200	61.3	masonry & timber floor
4050	4350	59.2	
4200	4500	57.1	light blocks & light floor
4350	4650	55.2	
4500	4800	53.4	
4650	4950	50.3	
4800	5100	47.2	
4950	5250	44.4	
5100	5400	41.9	
5250	5550	39.5	900mm of masonry
5400	5700	37.3	

Shorter & Intermediate lengths can be produced!

Permissible Moment*: 31.1 kN.m
Permissible Point Load*: 32.6 kN

LOAD RATIO LIMITS* (OUTER : INNER)
65-100% Max load: 2:1 - 1:14 OR < 65% Max Load: 3:1 - 1:19

*See page 78 for loading & installation guide

SPECIFYING OPTIONS FOR CC-TYPE LINTELS.

The specification convention for CC lintels is shown here with an example.

Should you require something different from the standard lintels listed in the tables, the specification components in blue can be varied to achieve non standard dimensions and features such as:

- a stepped outer,
- flat base (no plaster key)
- shorter or longer outer

All as shown in the example to the right.

*Standard stop ends supplied are adhesive for installation on site. For fully welded stop-ends incorporated into the lintel, specify 'LINTRAY®'.

